

Safe at Home



Don't let quarantine break you!

Motivation

The time when most of the people are ought to stay closed at home is at least troublesome for almost all of us. But for some, it's more of a game of survival than an unexpected holiday.

Victims of domestic abuse, medical staff travelling tremendous distances to help the others, the cases are varied. Whoever feels that they're not in the right place right now should have an alternative.

"On average, 24 people per minute are victims of rape, physical violence or stalking by an intimate partner in the United States – more than 12 million women and men over the course of a year."

Annals of Epidemiology, Volume 22, Issue 4, Pages 277-284

Bloomberg

U.S.

Crime Drops in Lockdown, Domestic Violence Risk Climbs

By [Edvard Pettersson](#), [Noah Buhayar](#), [Michelle Kaske](#), and [Mallika Mitra](#)
30 marca 2020, 12:00 CEST Updated on 30 marca 2020, 16:11 CEST

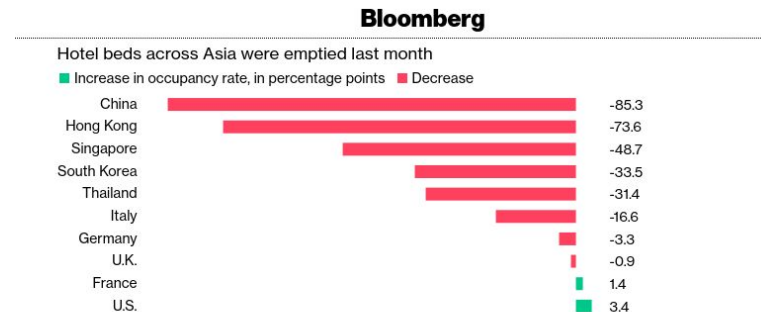
-
- ▶ [New York City sees a 25% reduction in crime across the board](#)
 - ▶ [Domestic violence calls rise in Seattle as residents stay home](#)
-

Motivation

Therefore, we decided to build a web application, which will connect people in need with available facilities.

Hotels, hostels and empty rent apartments, that would otherwise be flooded with tourists, are now almost completely abandoned and could make the difference between life and death for somebody.

Let us make it happen!



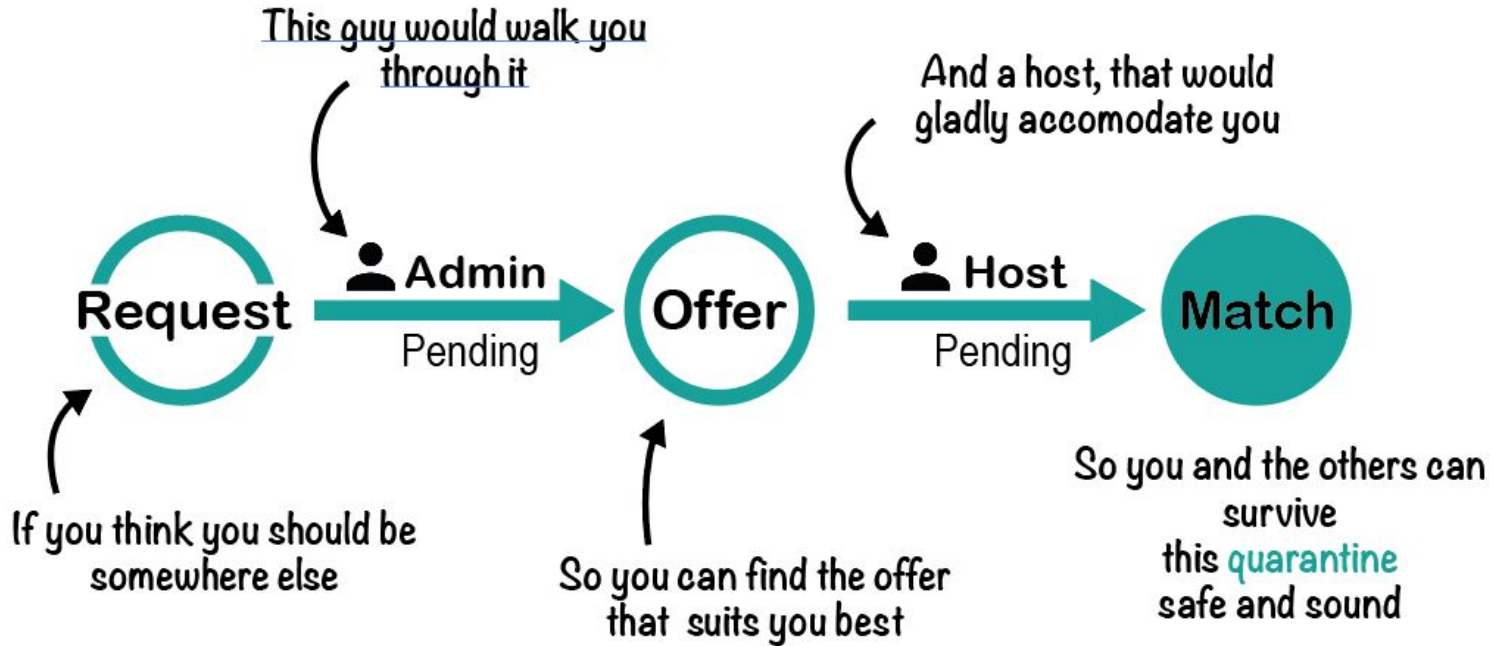
Source: STR. Data are for Feb. 1 through Feb. 23, 2020, compared with a year earlier

Koronawirus. Osoby doświadczające przemocy domowej znalazły się w sytuacji zagrożenia życia – RPO wystąpił do minister rodziny

Data: 2020-03-30

- W związku z ograniczeniami wolności przemieszczania się i wprowadzeniem dla części obywateli obowiązkowej kwarantanny osoby doświadczające przemocy domowej znalazły się w niezwykle trudnej sytuacji
- W obecnych warunkach wzrasta zagrożenie ich życia i zdrowia
- RPO zaapelował do Minister Rodziny, Pracy i Polityki Społecznej oraz Komendanta Głównego Policji o zapewnienie prawidłowego funkcjonowania systemu wsparcia dla ofiar przemocy domowej

How *Safe at Home* can help you?



What happens behind the scenes?

Hotels, hostels

Potential hosts offer up their places for a duration of time

Hotel owners have a surplus of empty rooms, some church organization has a few beds etc.

All these places can be submitted to the system and these offers will be reviewed by administrators.

Guests

People feeling a lack of safety in their homes

By registering on the platform and describing their cases,, they become part of a pool of applicants that are searching for temporary shelter away from the unsafe environments in which they currently find themselves.

Platform Administrators

Approval of requests and offers

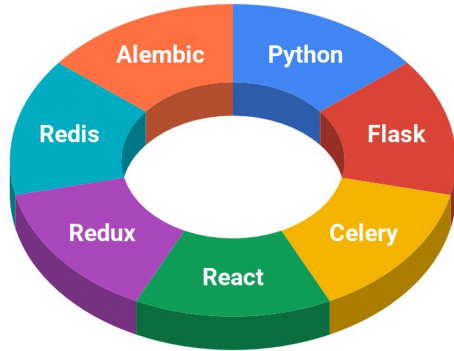
Administrators review offers and contact the owners, verifying their validity. Approved locations are stored in the system until guests are automatically discovered. "Guests" requests after approval go into a "ready to match" state.

Matching!

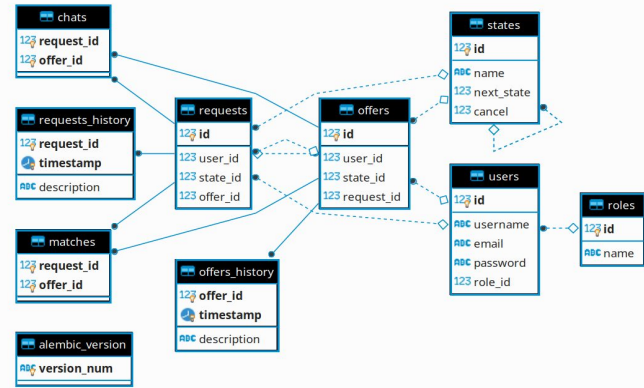
Matching involves automatic jobs running in the background.

Guests are matched as best as possible to the offers that exist at a given time, preferring the closest locations and the best date overlap

Application architecture and technologies diagram



Technologies involved



Simplified database design

We deploy the back-end and front-end from the same repository on **Heroku**, in a process of continuous integration. Currently migrating to **DigitalOcean** in order to accommodate the needs of adding **Redis** as a background task processing queue. Matches of guests and hosts are done periodically using **Celery** tasks.

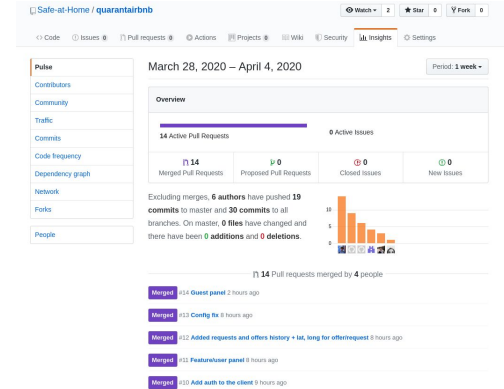
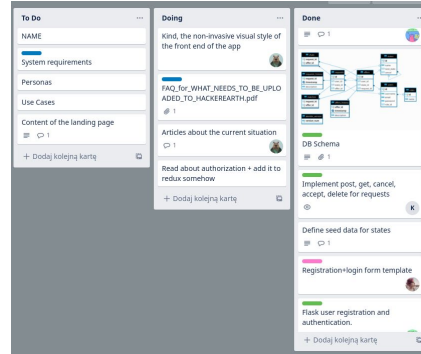
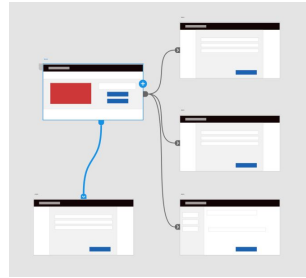
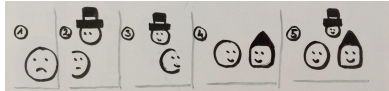
Work Progress

First sketches and user stories creation

Designing and workflow planning

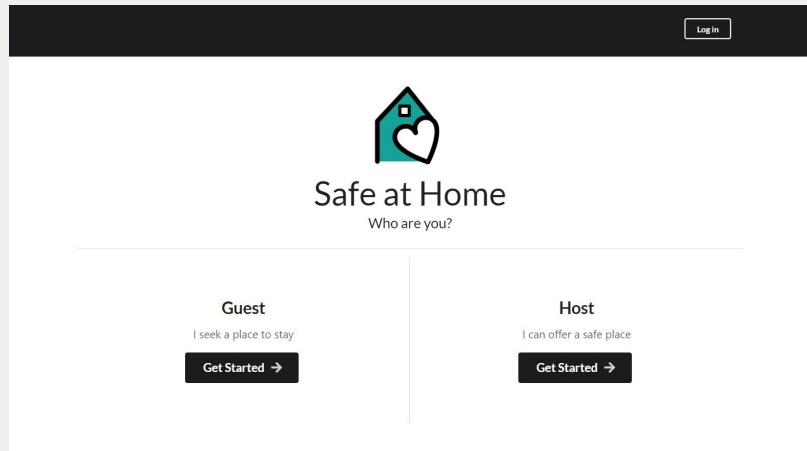
Dividing tasks

Implementation and deployment

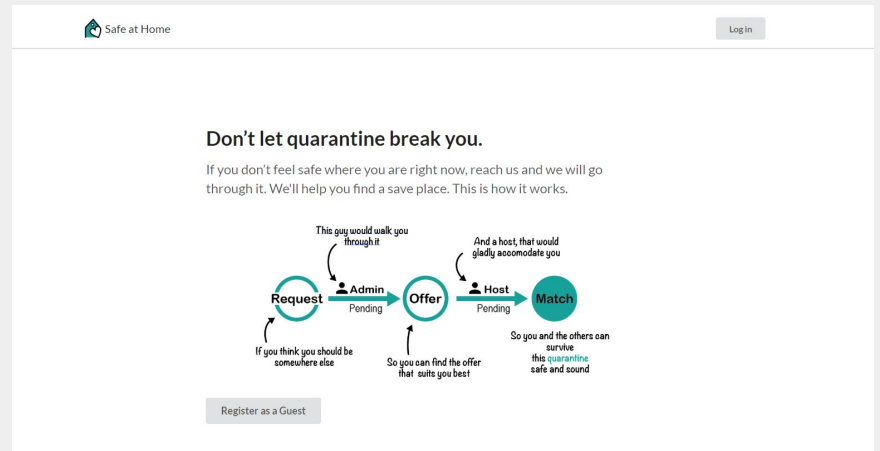


Safe at Home - Application Design

The Landing Page



The landing page features a dark header with a "Log In" button. The main content area is white and contains a logo of a house with a heart inside, followed by the text "Safe at Home" and "Who are you?". Below this, there are two columns: "Guest" with the subtext "I seek a place to stay" and a "Get Started →" button, and "Host" with the subtext "I can offer a safe place" and a "Get Started →" button.



The landing page features a light header with a "Safe at Home" logo and a "Log In" button. The main content area is white and contains the heading "Don't let quarantine break you." followed by the text "If you don't feel safe where you are right now, reach us and we will go through it. We'll help you find a safe place. This is how it works." Below this is a process flow diagram showing the steps: Request (with a note "If you think you should be somewhere else"), Admin (with a note "This guy would walk you through it"), Offer (with a note "So you can find the offer that suits you best"), Host (with a note "And a host, that would gladly accommodate you"), and Match (with a note "So you and the others can survive this quarantine safe and sound"). A "Register as a Guest" button is located at the bottom left of the main content area.

Safe at Home - Team

